

Installing Unsigned Drivers in Windows 8

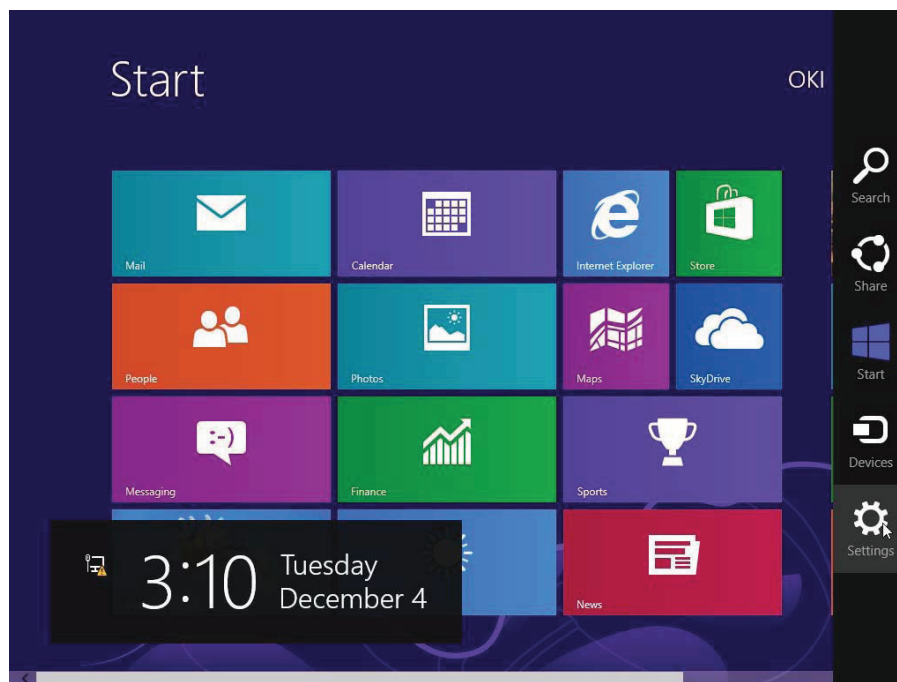
In Windows 8, Microsoft has restricted the installation of device drivers to those which have been digitally “signed”. In order to install some printers, it may be necessary to disable the driver signing enforcement using the following steps.

Note: Ensure that all work is saved as the workstation will reboot during this process.

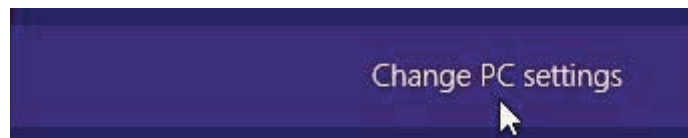
1. Open the Windows Charms sidebar on the right side of the screen by swiping the lower right corner or dragging the mouse to the lower right corner.

For more information about the Windows Charms sidebar click here:
<http://windows.microsoft.com/en-US/windows-8/charms#1TC=t1>

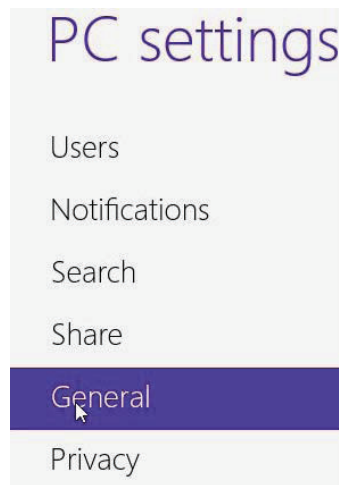
2. Select **Settings** (gear icon) on the lower right



3. Select **Change PC Settings**



4. Select **General** on the PC Settings list



5. Scroll to the bottom of the General settings to find Advanced startup and select **Restart now**

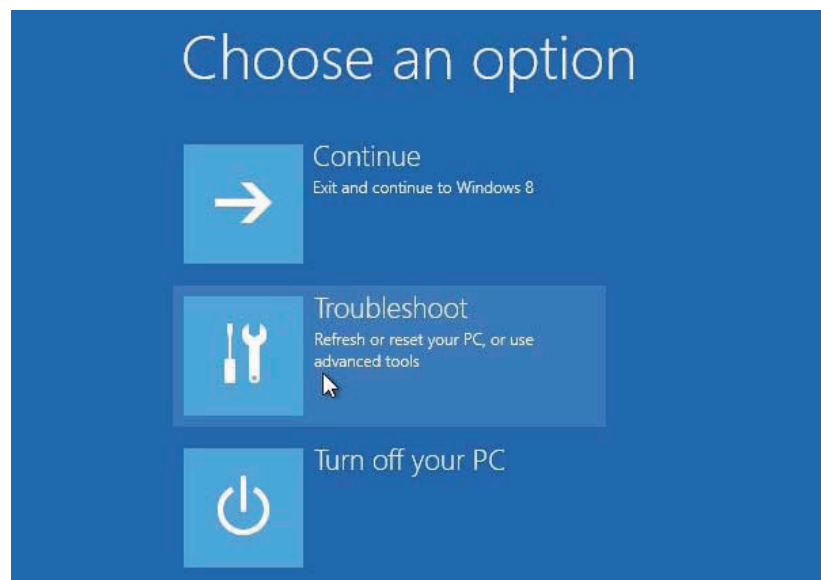
Advanced startup

Start up from a device or disc (such as a USB drive or DVD), change Windows startup settings, or restore Windows from a system image. This will restart your PC.

Restart now



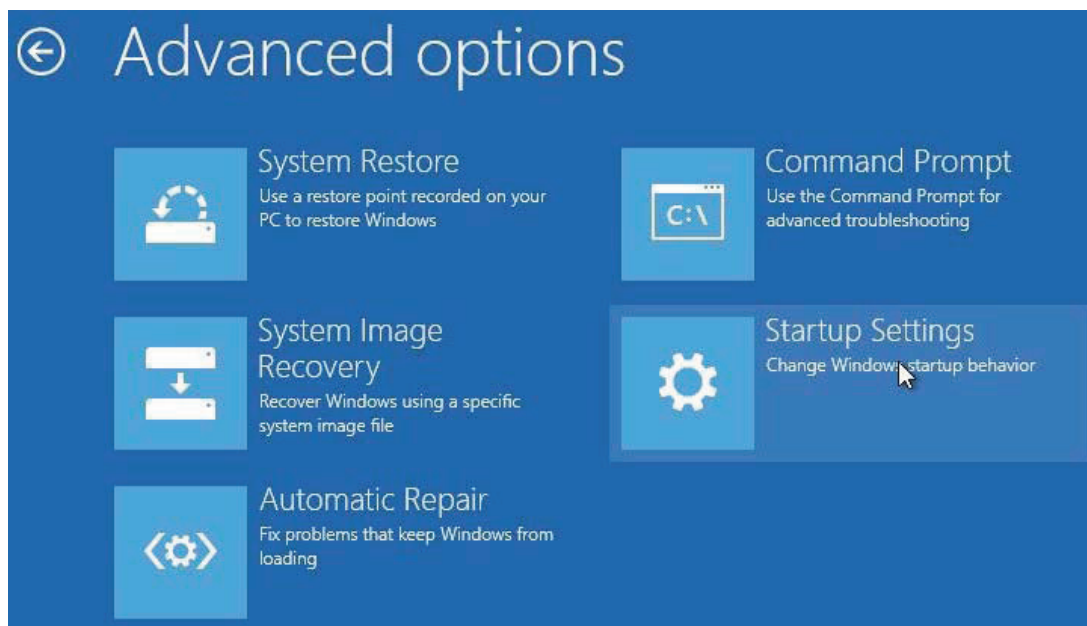
6. After a Please Wait message, new options appear. Select **Troubleshoot**



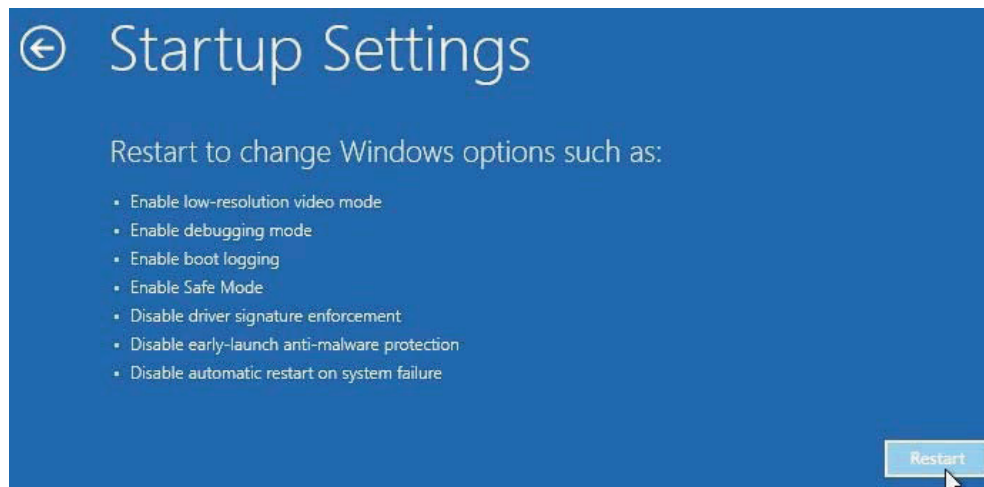
7. In the Troubleshoot menu, select **Advanced options**



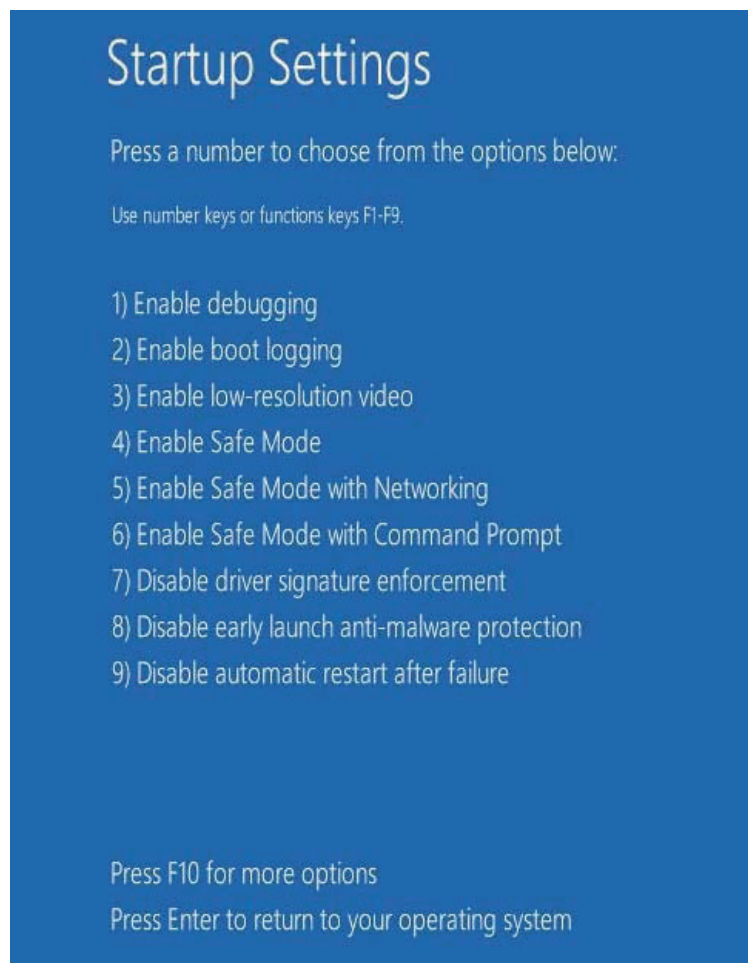
8. Select **Startup Settings**



9. In the lower right of the Startup Settings menu, select **Restart**

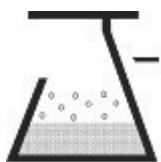


10. The computer will reboot. During startup the following screen will be displayed. Select **Disable driver signature enforcement** by pressing the appropriate number key on the keyboard (#7 on this menu)



11. Computer will continue normal startup. You may now proceed with driver installation.

* Please note that this is a one boot option. When the PC is rebooted, enforcement will be in effect again. This will not affect the driver once it is installed.



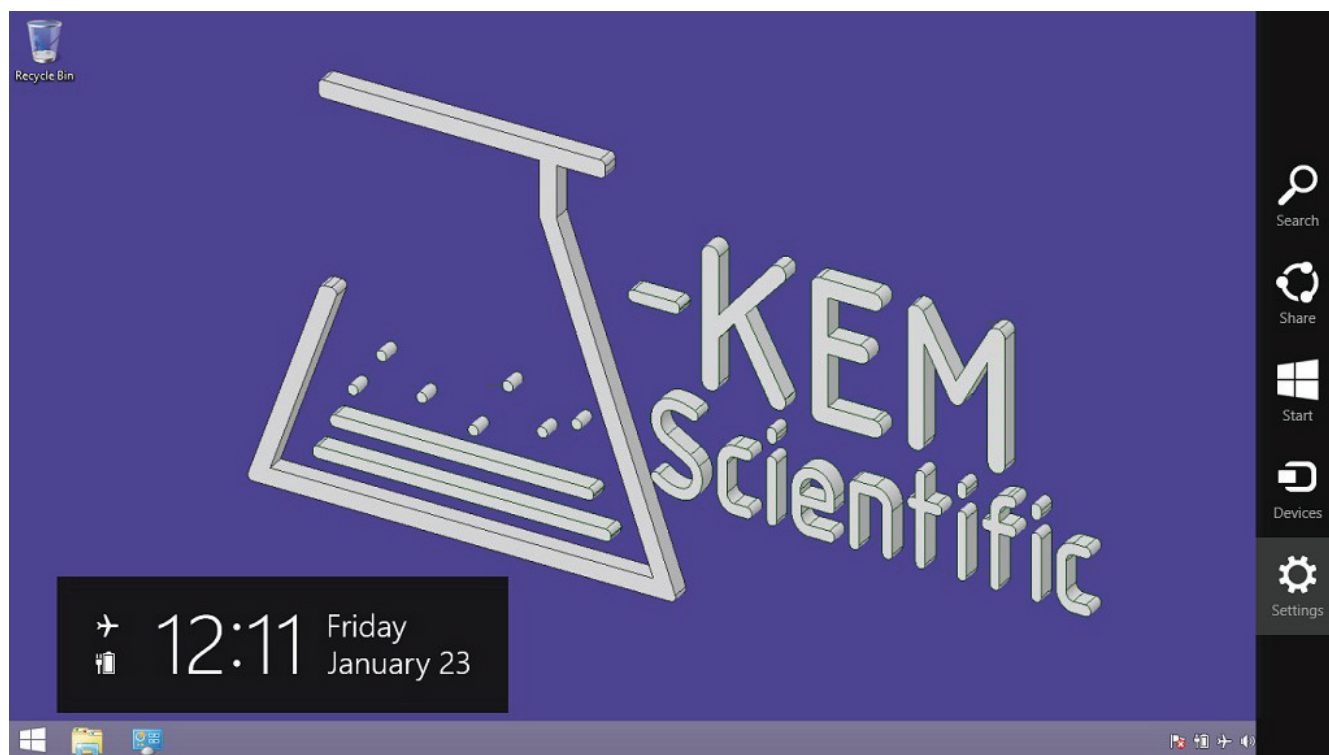
J-KEM Scientific, Inc.
Instruments for Science from Scientists

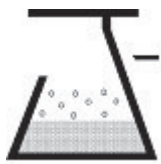
J-KEM Scientific, Inc.
6970 Olive Blvd.
St. Louis, MO 63130
(314) 863-5536
Fax: (314) 863-6070
E-Mail: jkem911@jkem.com

Instructions for Installing J-KEM Controller Drivers

To install drivers under Windows 8, follow the instructions below:

Connect the J-KEM Controller to a spare USB port on your PC. Then drag the mouse cursor to the lower right corner or press the Win + C keyboard combination to bring up the Charms Bar and click on "Settings".





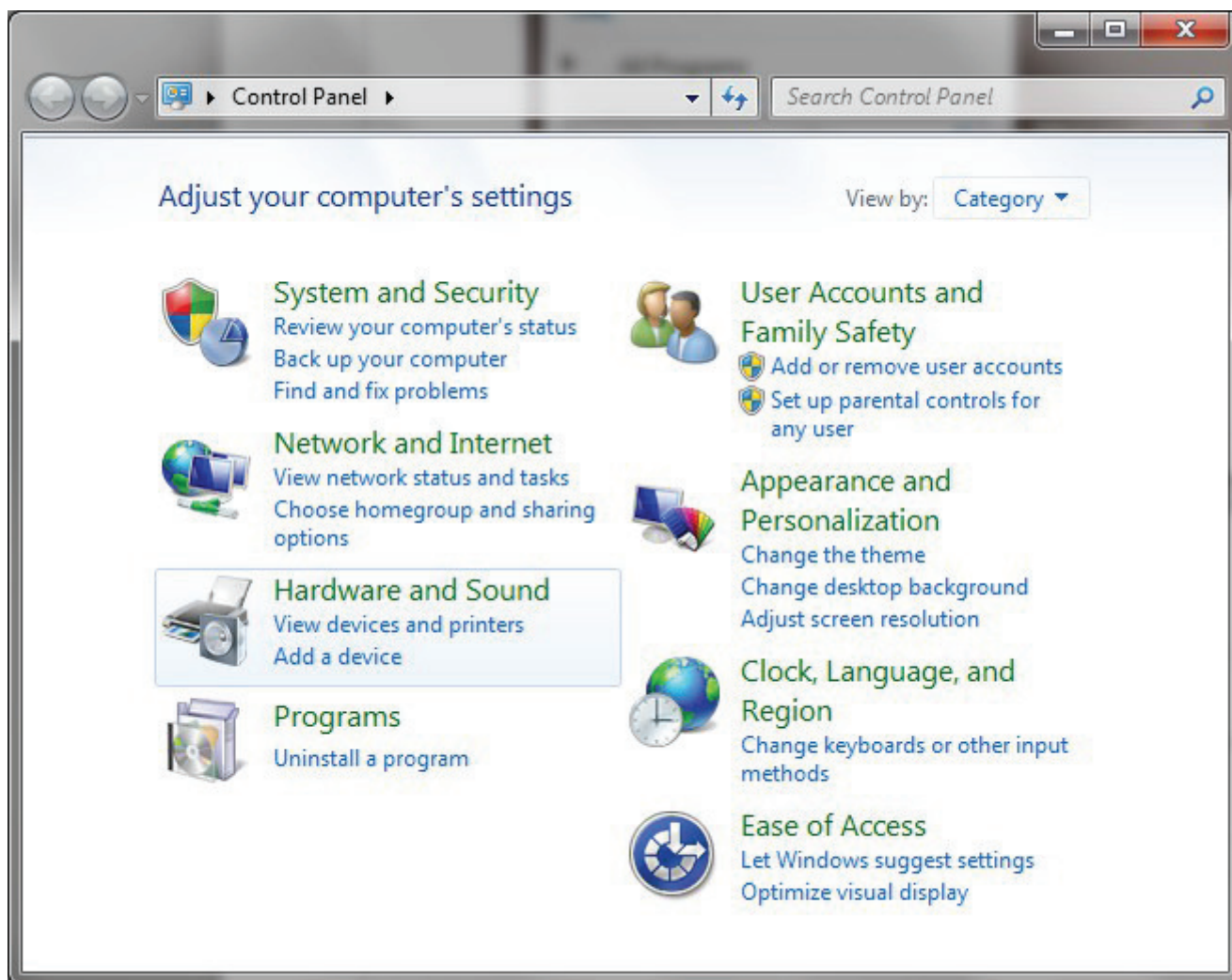
J-KEM Scientific, Inc.
Instruments for Science from Scientists

J-KEM Scientific, Inc.
6970 Olive Blvd.
St. Louis, MO 63130
(314) 863-5536
Fax: (314) 863-6070
E-Mail: jkem911@jkem.com

Next, click on "Control Panel".



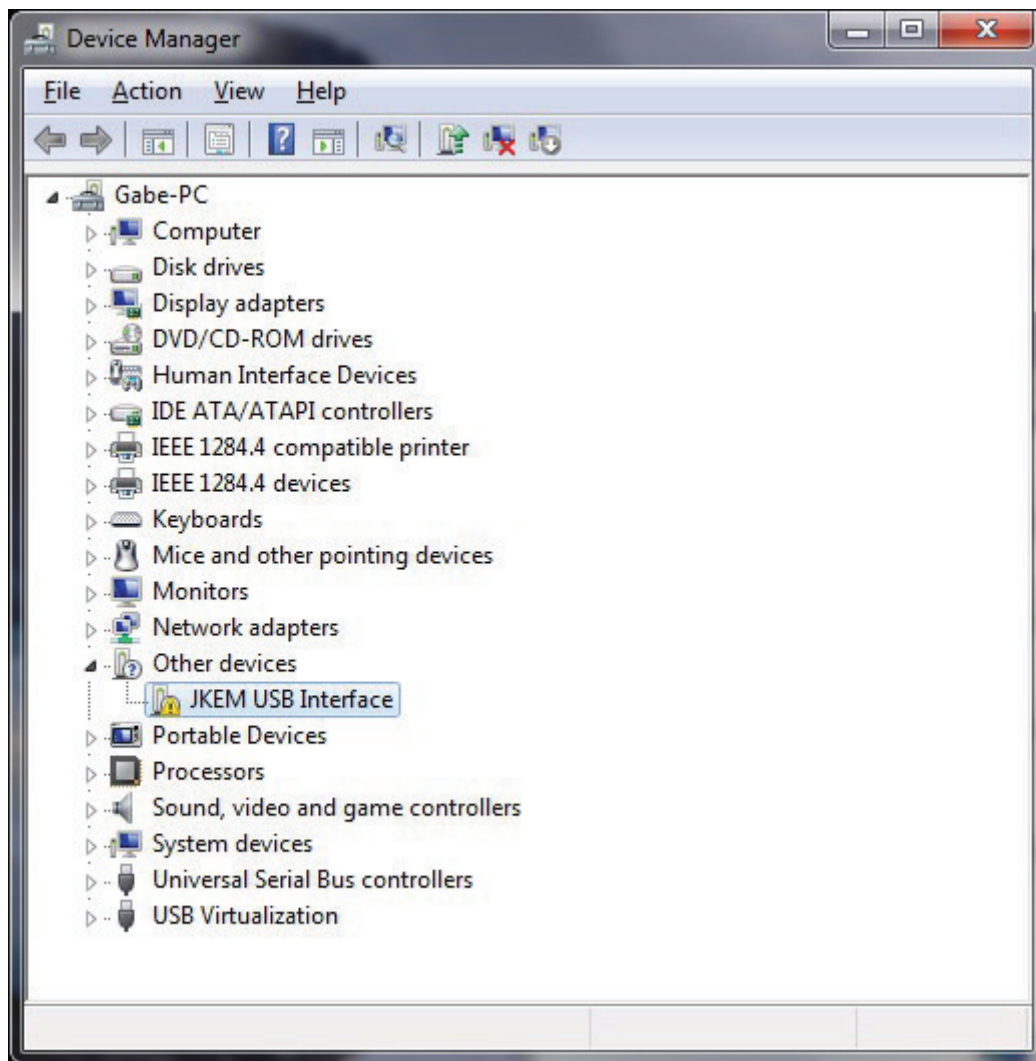
From the Control Panel window select “Hardware and Sound”.



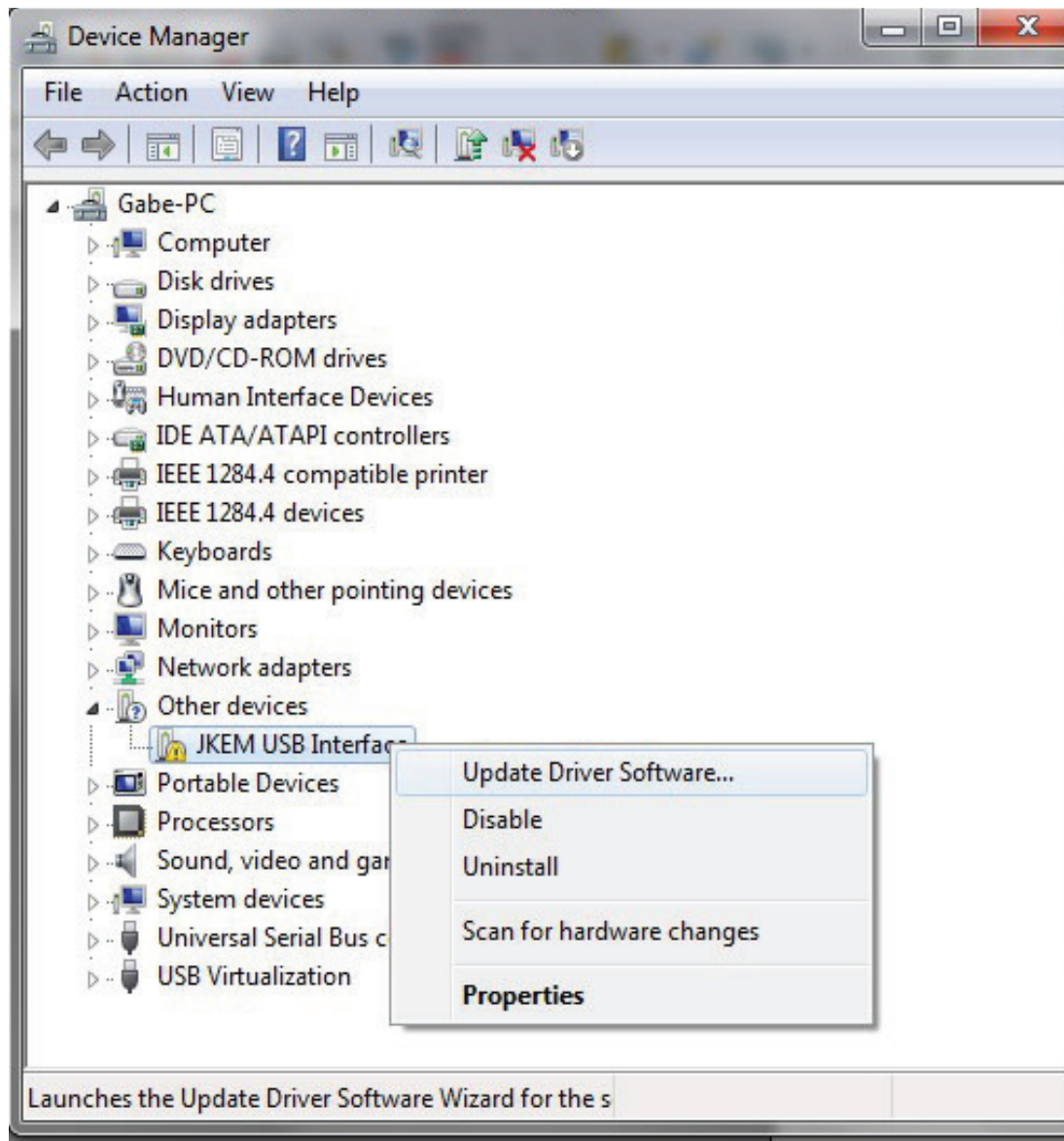
At the next screen select “Device Manager”.



In the Device Manager window there will be a device under “Other Objects” with a yellow warning symbol to indicate a problem, i.e. no driver installed. The text next to this device will depend on the device attached. In this example the device is a J-KEM USB Interface device.

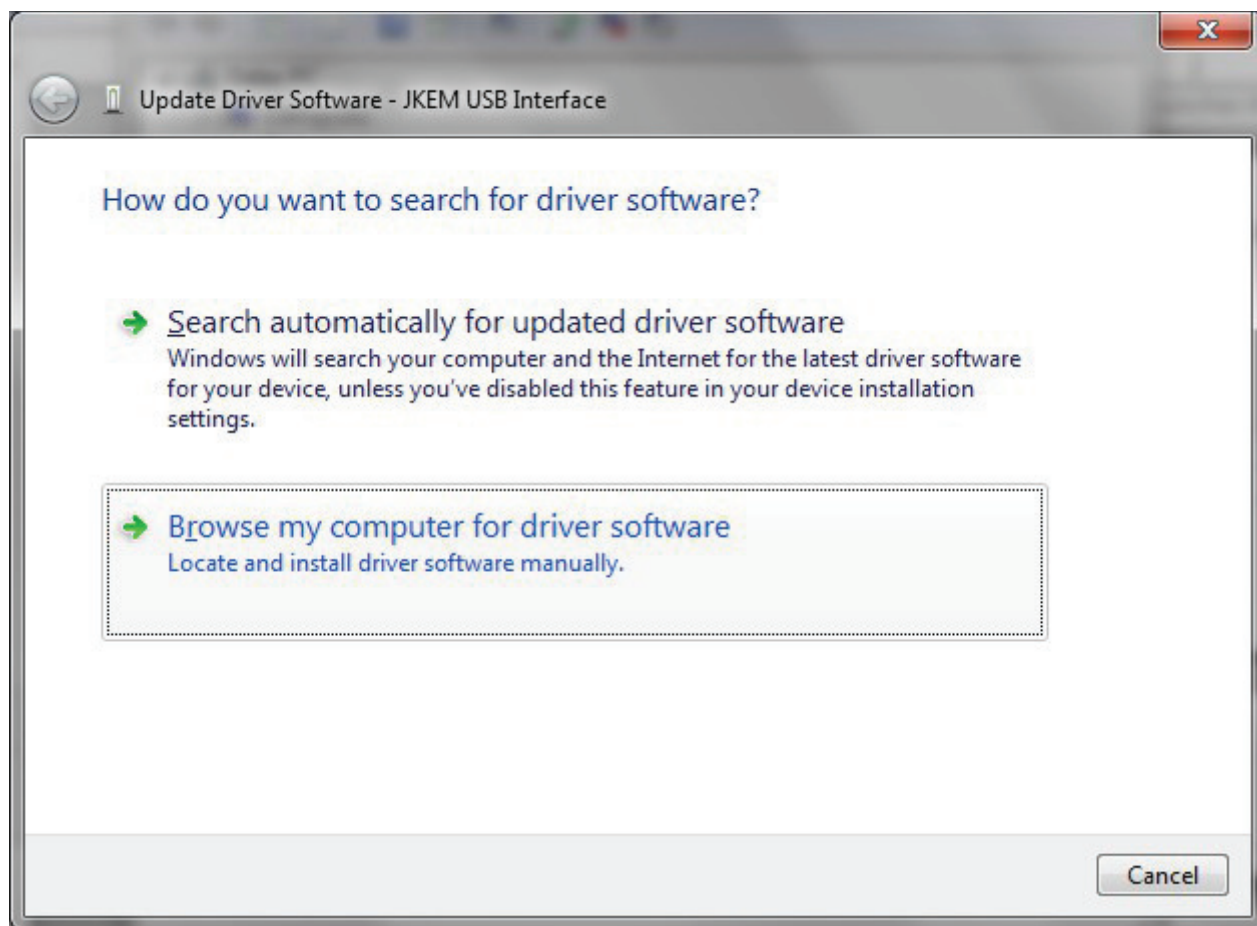


Right click on the “JKEM USB Interface” under Other devices to bring up a menu as shown below:

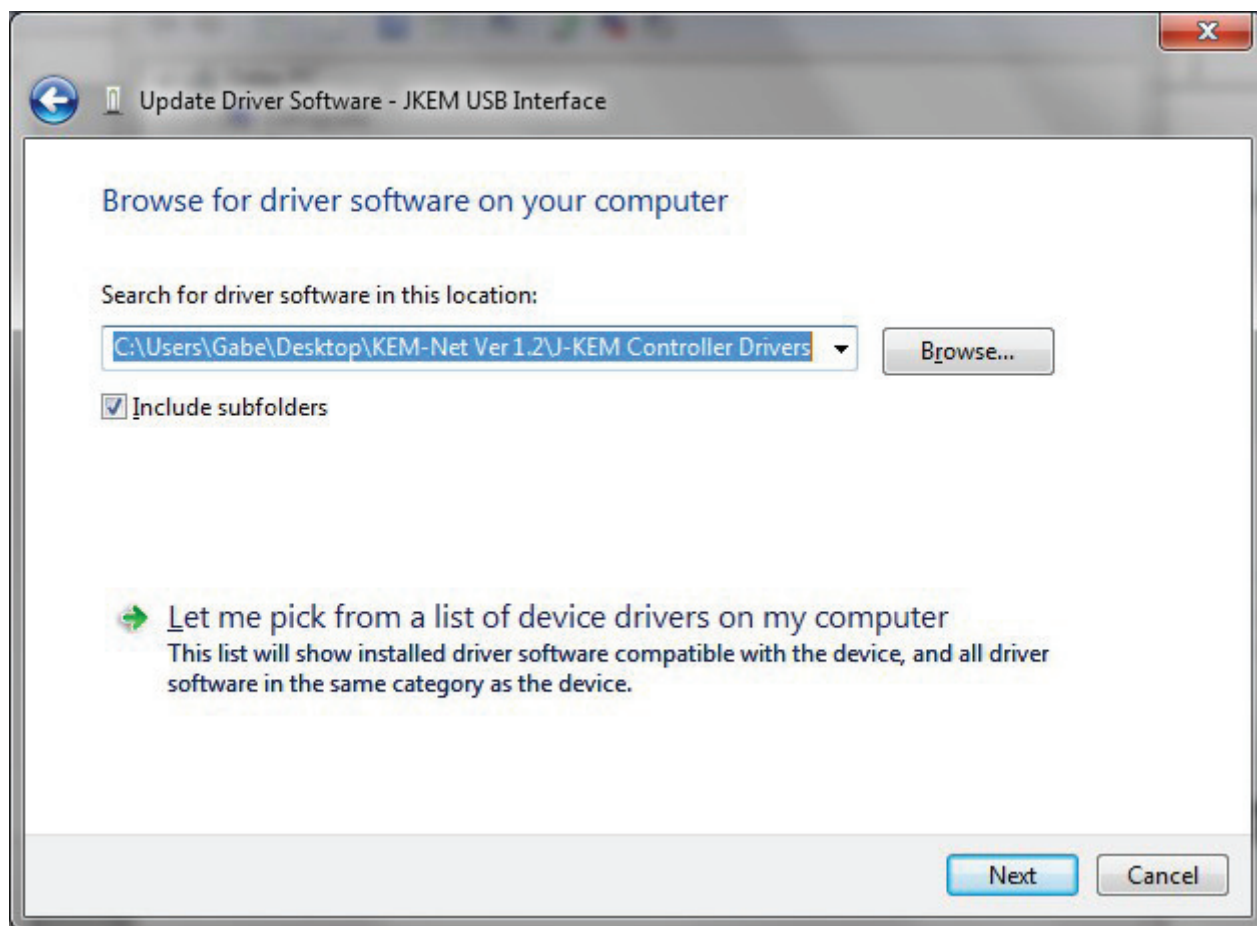


Select “Update Driver Software” from this menu.

Then this displays the option for an automatic search or a manual search.
Select the “Browse my computer for driver software” option.



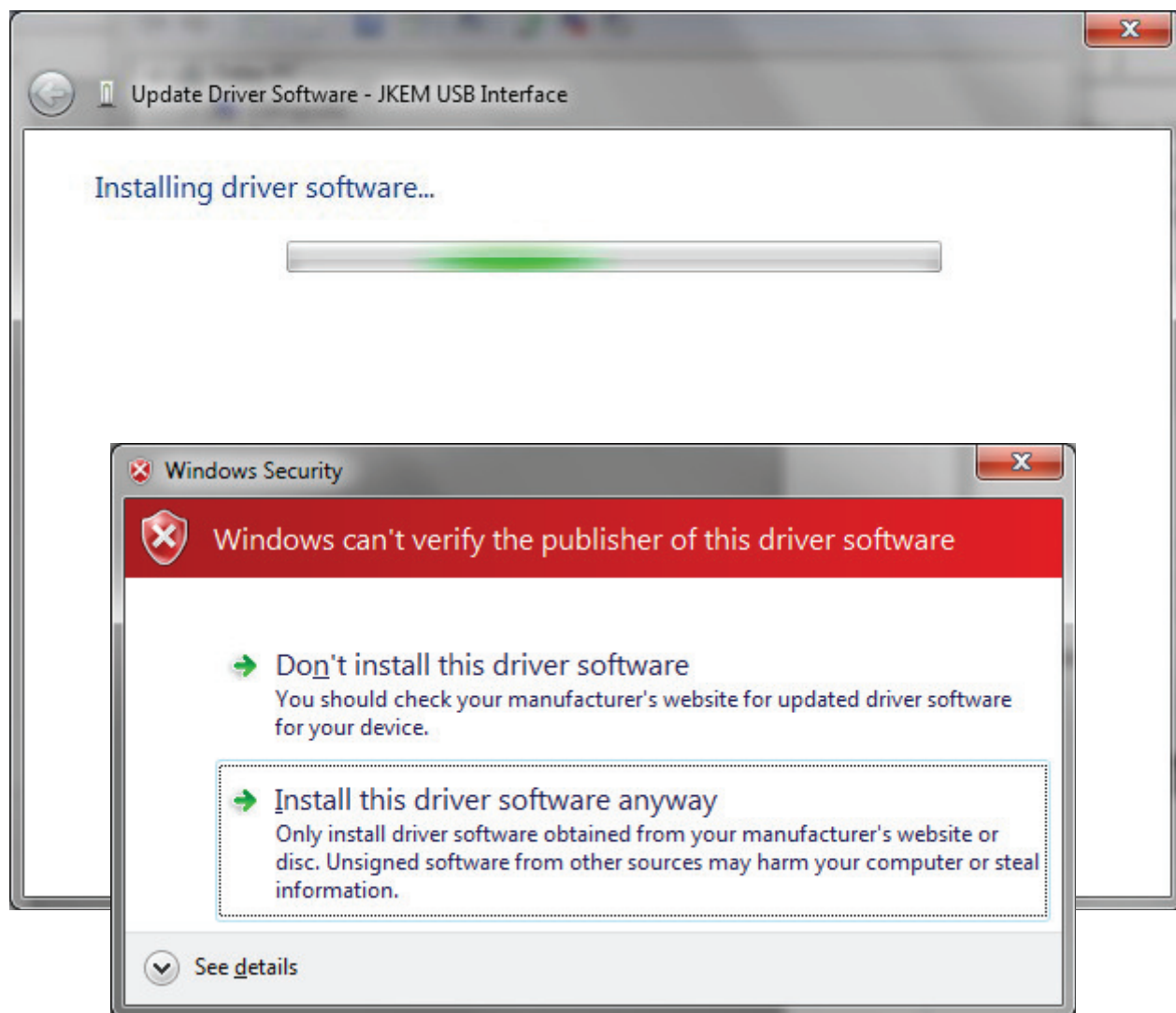
This screen will appear:



In the address bar put the exact location where the drivers are saved. If you don't remember the exact address you may need to click on the "Browse" button to locate the file. The "J-KEM Controller Drivers" folder is a sub-folder of the "KEM-Net Ver 1.2" folder which is the one you downloaded from the J-KEM website. In this example, the folder is located on the Desktop, but you may have saved the file in a different location. Locate the folder on your computer and click "OK".

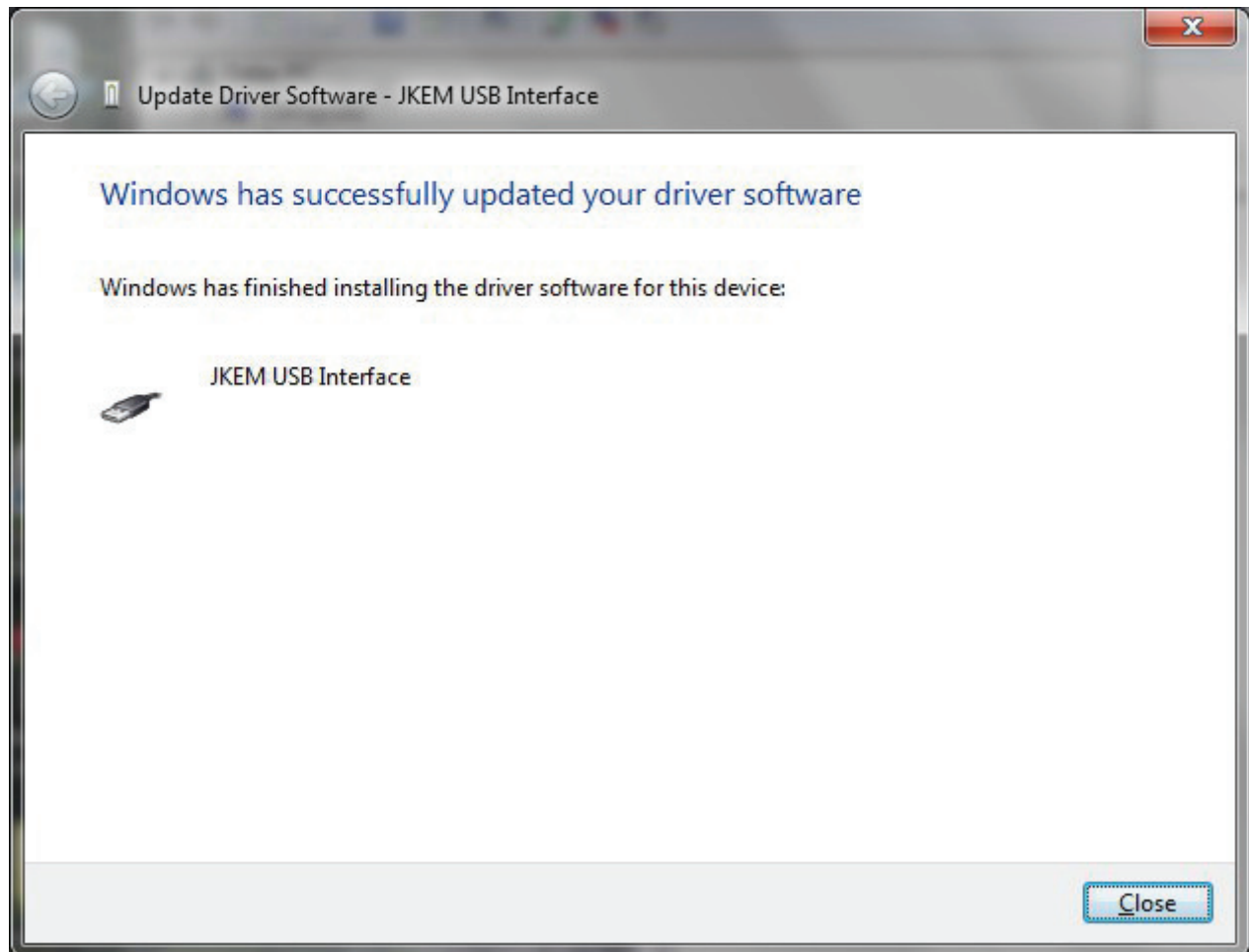
Once the file is located select "Next" to start the installation.

You will see this:

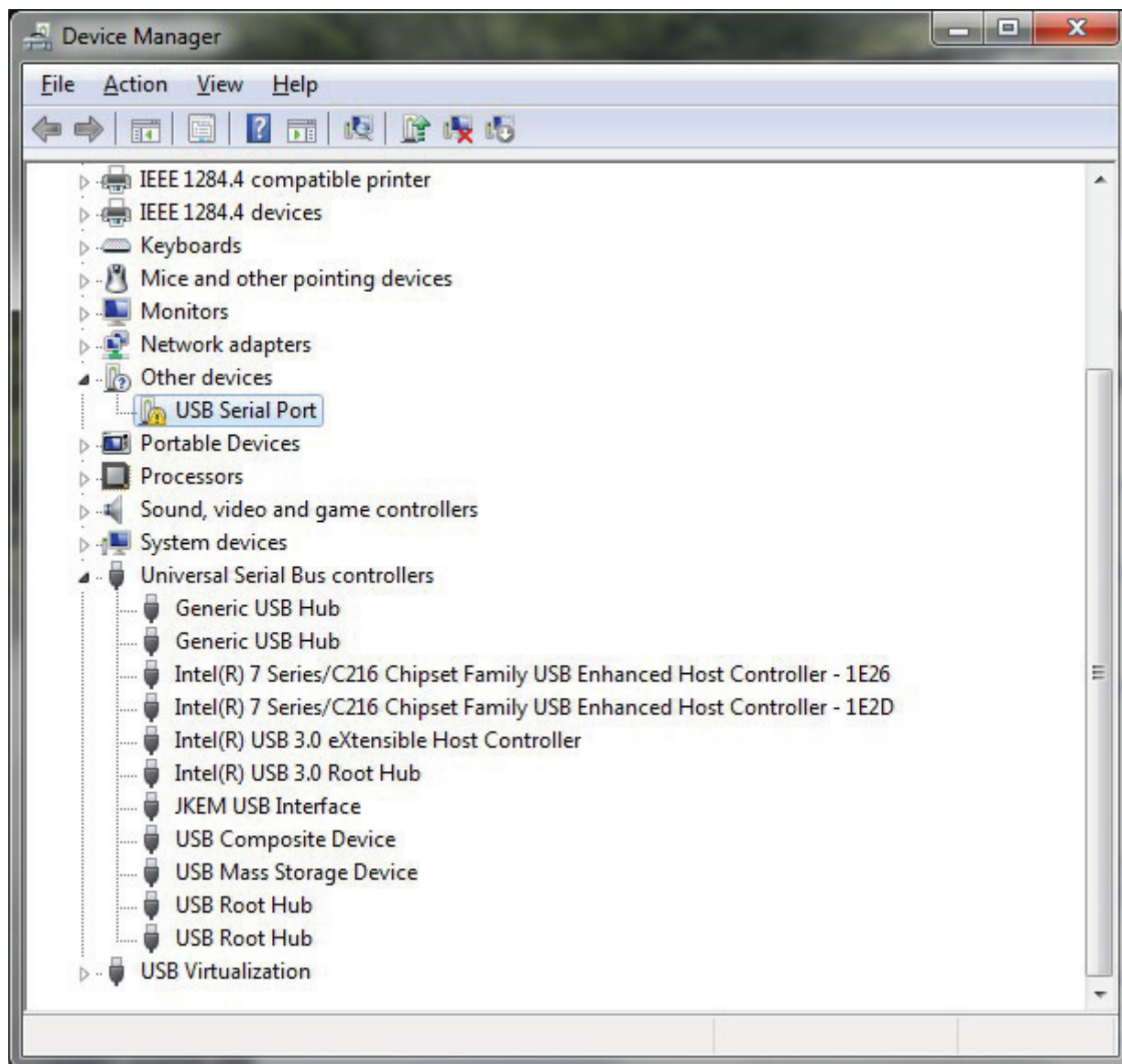
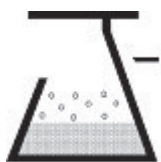


Click "Install this driver software anyway".

Then this screen will appear:

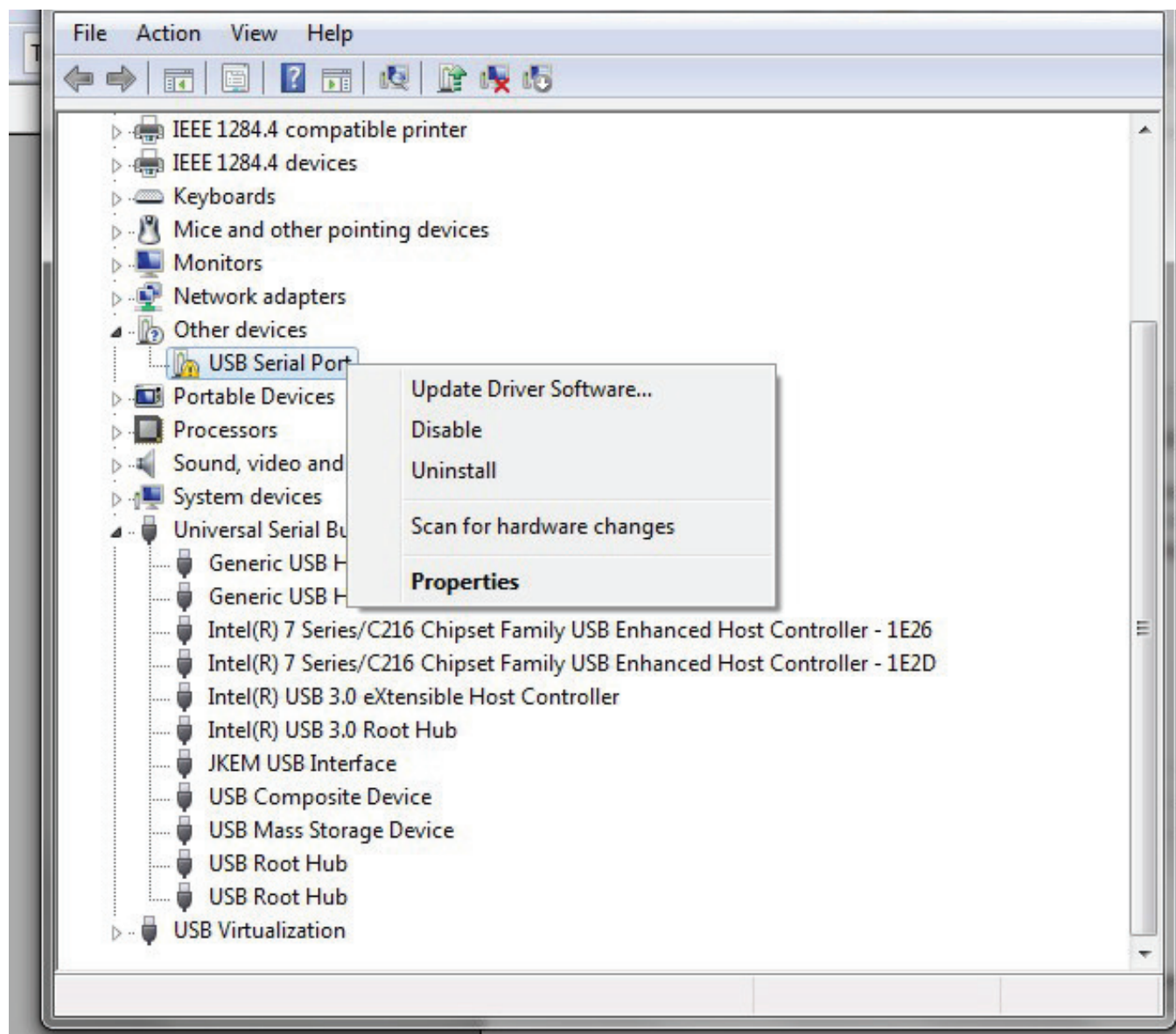


Select "Close" and go back to the Device Manager window.

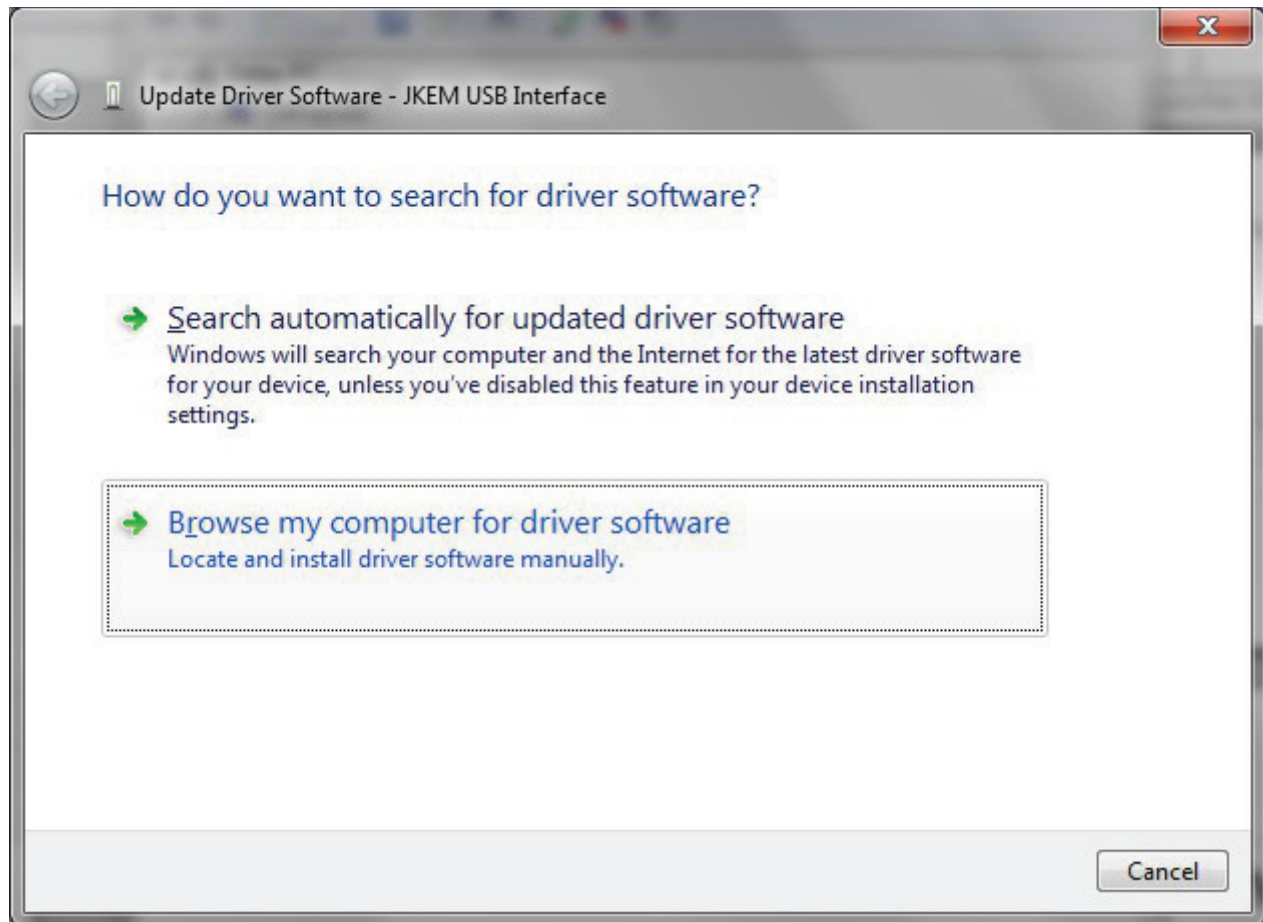


You will now see a new entry under the “Universal Serial Bus controllers” list which says “JKEM USB Interface”. This indicates the bus layer of the driver is installed, but we are not done yet. We still need to install the Virtual Com Port layer of the driver which is almost a repeat of the last few steps. If you look under “Other devices” you will still see a little yellow warning sign at “USB Serial Port”.

Right click on “USB Serial Port” as shown below and select “Update Driver Software...” from the menu.

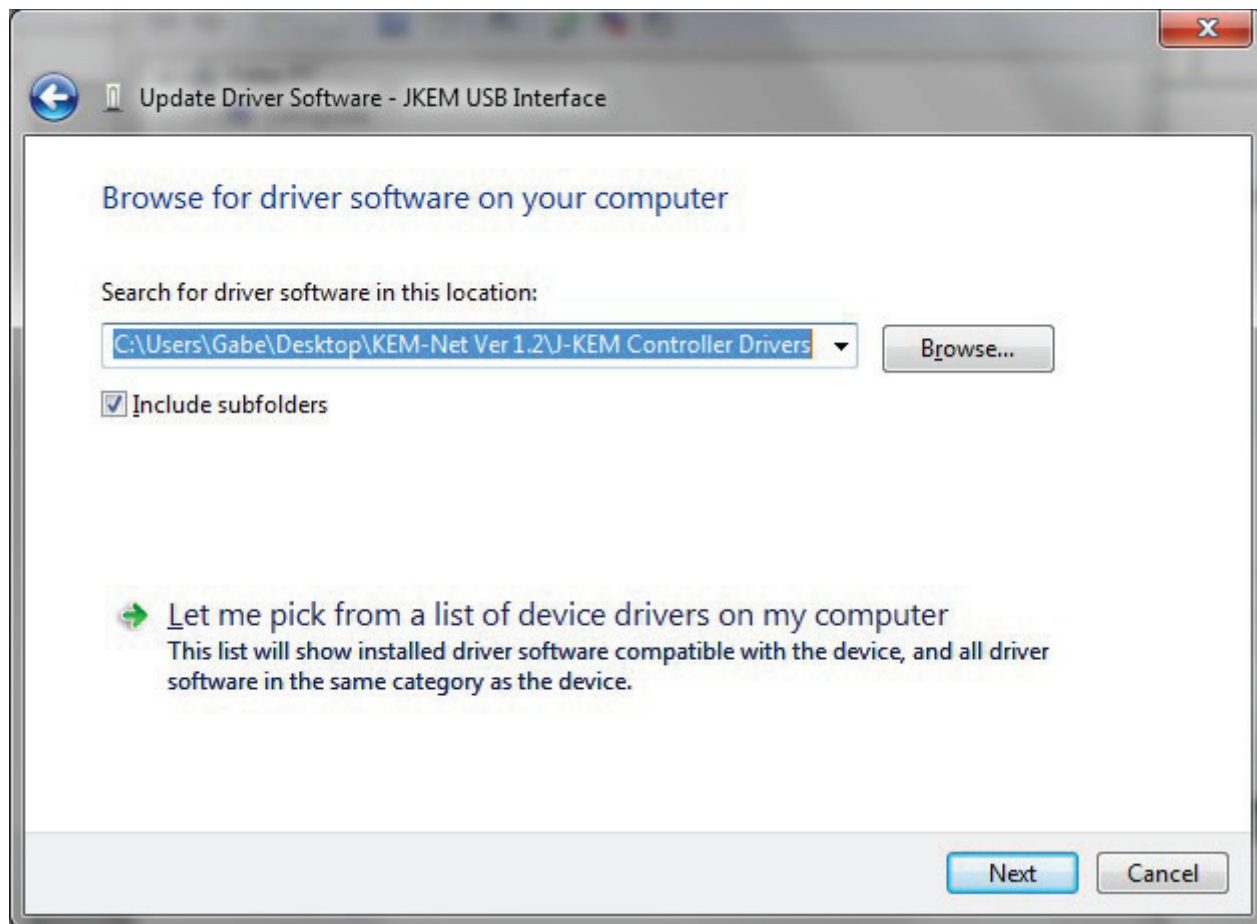


You will see this:

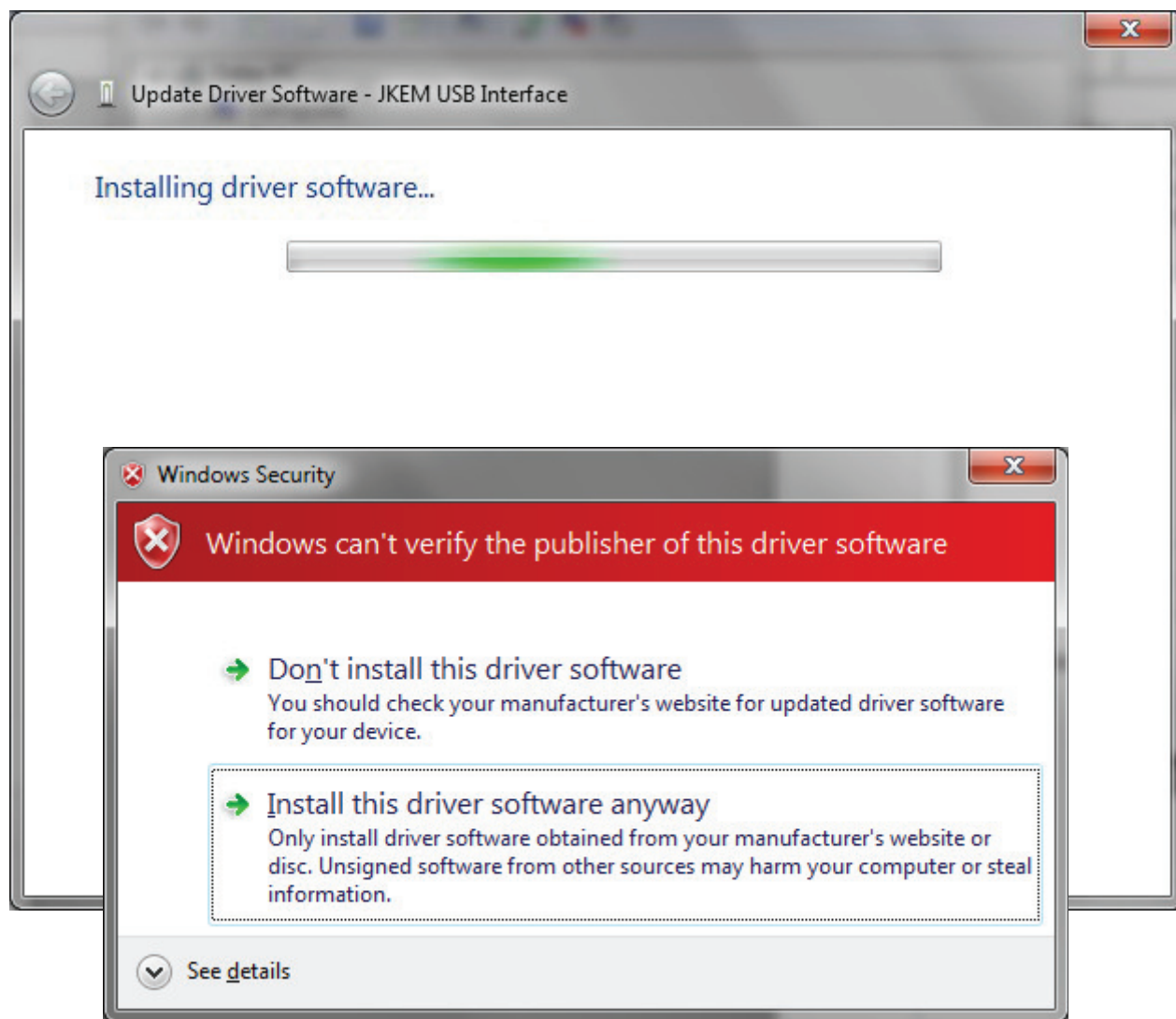


Select the "Browse my computer for driver software" option.

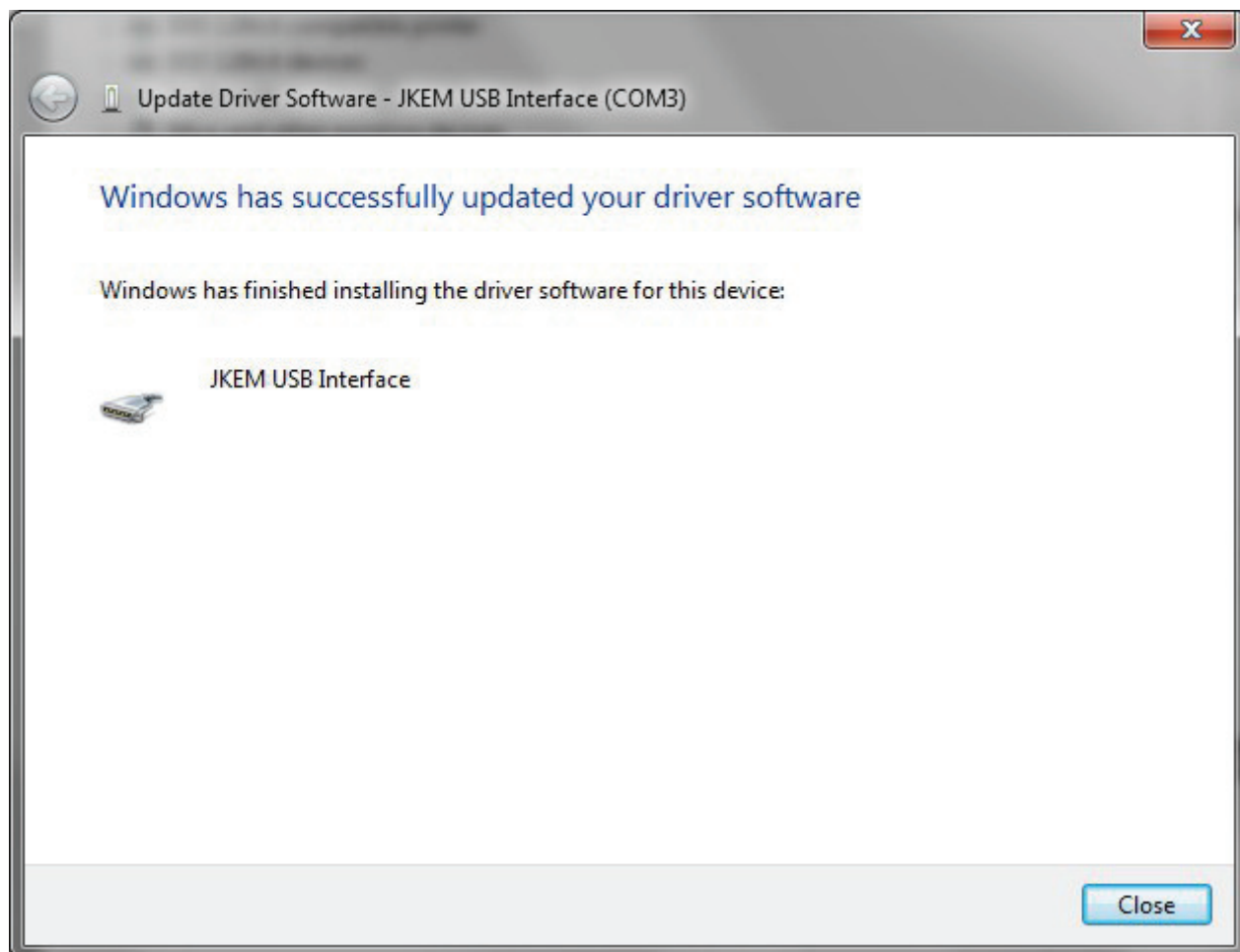
Once again, locate the “J-KEM Controller Drivers” folder and click “Next”.



You will see this again:

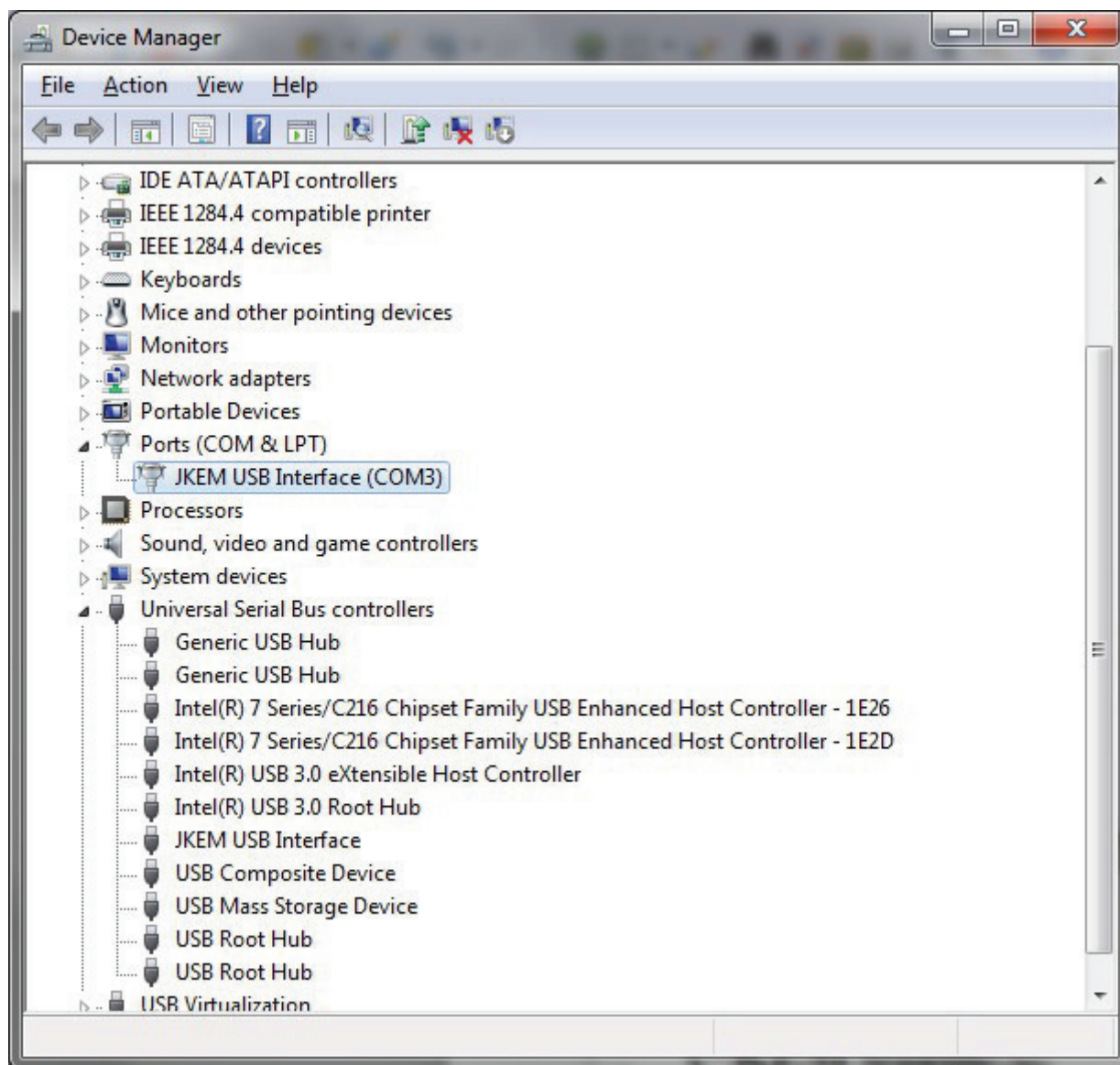


You know what to do! Click "Install this driver software anyway".

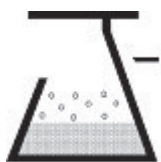


Note that this screen also displays the COM port (COM3 in this example) assigned to the device. Don't worry if your screen doesn't show COM3, your computer will probably allocate a different port. Click on the "Close" button and return to the Device Manager screen.

This time the Device Manager doesn't have a "USB Serial Port" entry under "Other devices" but does show entries under "Universal Serial Bus controllers" and "Ports(COM & LPT)". The screen below shows a correct installation and the device is ready to use on COM3.



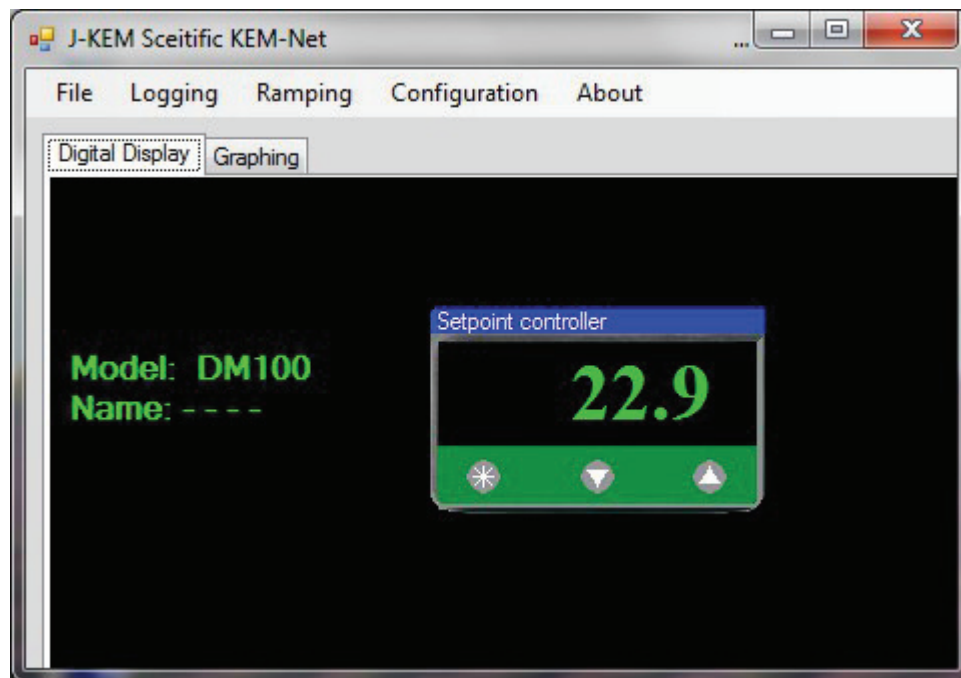
You can now close the Device Manager window and start the KEM-Net software.



J-KEM Scientific, Inc.
Instruments for Science from Scientists

J-KEM Scientific, Inc.
6970 Olive Blvd.
St. Louis, MO 63130
(314) 863-5536
Fax: (314) 863-6070
E-Mail: jkem911@jkem.com

After you start the KEM-Net software you should see a meter on you screen as below and it should be reading the same number as on your physical controller.



Congratulations!! You are now in control!